



An OpenLogic

ERP Solution

for Large & SME
Industry



Experience the proven business growth tool for Large & SME industry.

DataNote is not just an ERP but its framework, which enables the possibility of enriched customization. **DataNote** is the leading Dual Platform ERP framework which can be hosted on the cloud as well as you can keep it in your local premise. **DataNote** ERP solution is specifically designed for all those organizations which wants to keep their data ready with maximum analysis and minimum effort.

DataNote is not like any other standard or local ERP. It's first ERP of its kind in the market which offers huge customization possibilities with the help of customization panel which is available within the solution.



Tailored Industry Specific Solution,

Food & Beverages Industry

Spices and Ingredients,
Packaged Foods,
Candies and Confections,
Bakery & Chocolate



Plastic & Rubber Industry

Woven and Geosynthetic,
Moulding,
Pipes and Fittings,
Disposable Items



Chemical Industry

Paint Industry,
Pharmaceuticals,
Pesticides and fertilizers,
Dyechem



EPC & Construction Industry

Engineering & Procurement Co.,
Construction Industry,
Infrastructure Industry



Healthcare Industry

Cosmetics Industry,
Ayurveda Industry,
FMCG - Household Industry



Engineering Industry

Parts Manufacturing,
Machine Manufacturing,
Fabrication & Heavy Engineering



Metal Industry

Tube and Pipe Manufacturing,
Coil And Sheet Processing,
Rolling Mills Industry



Casting & Forging Industry

Investment Casting,
Sand Casting,
Foundry Industry



Solar Industry

Solar Panel Manufacturer,
Electronic Instruments,
LED Lights Manufacturer



Building Material Industry

Cement & RMC Industry,
Glass Manufacturers,
Ceramic Industry



SALES MANAGEMENT

- Dispatch Planning
- Sales Invoicing
- Point of Sale
- Sales Return
- Packing Slip

FINANCE MANAGEMENT

- General Ledger
- Accounts Payable
- Accounts Receivable
- Cash Management
- Fixed Asset Management
- Advance Allocations
- GST Integrated
- Consolidations

PRODUCT DATA

- Bill of Material
- Process Routing
- Engineering Change & Revision Control
- Product Specification & Accessories
- Product Costing

PLANNING & PRODUCTION

- Material Requirement Planning
- Production Scheduling
- Machine Planning
- Production Process wise QC
- Work Order Management
- Job Work Management

PROJECT MANAGEMENT*

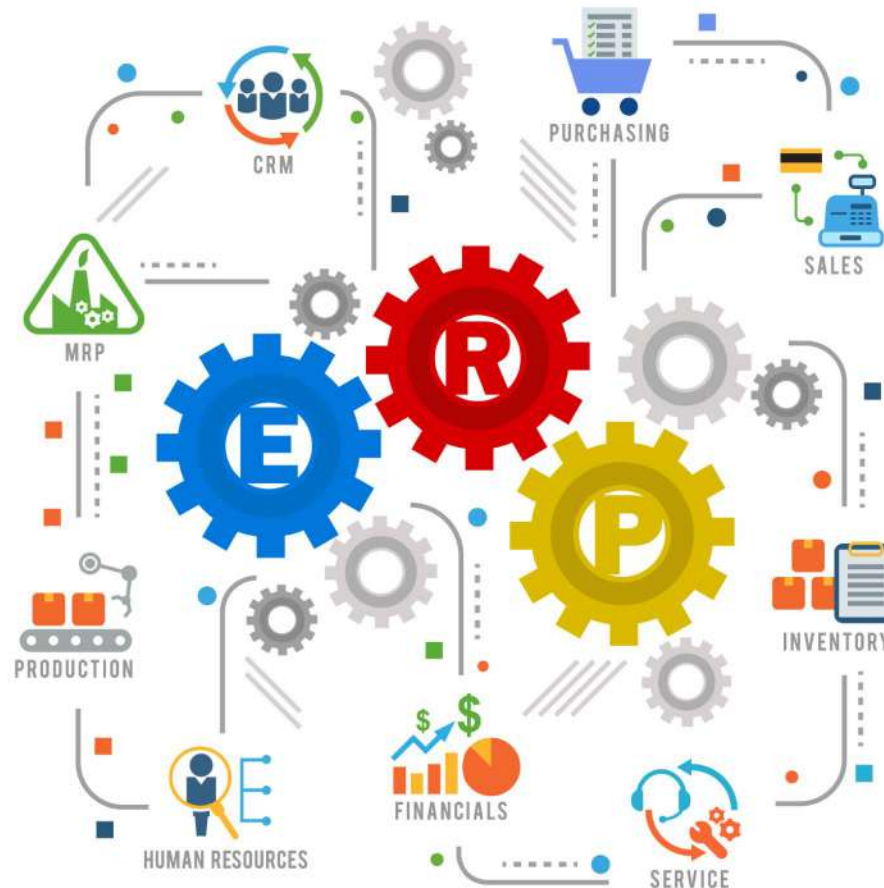
- Project Planning
- Resource Management
- Time Planning - Scheduling
- Site Progress Management
- Expense Management
- Project Billing & Breakup

PURCHASE MANAGEMENT

- Indent Management (Auto - Manual)
- RFQ - Request for Quotation
- Quotation Comperasion
- Purchase Order Management
- Gate Inward Management
- Inward QC
- GRN & Bill Booking
- Purchase Return Management

HUMAN RESOURCE

- Payroll Management
- Tour & Travelling
- Loan / Advance
- Leave Management
- Salary Generation
- Human Resource Management
- Induction & Training
- Attendance Management



Marketing / CRM

- Contact Management
- Lead & Opporchunity Management
- Estimate & Quote Management
- Order Management
- Case & Solution Management
- Mobile Connect

MAINTENANCE

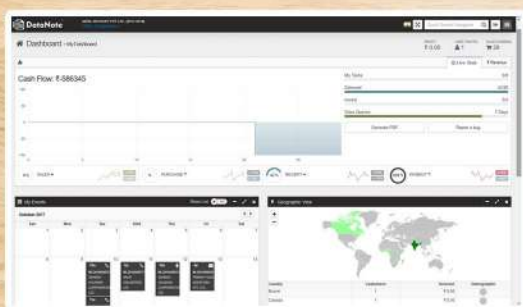
- Machine Registration
- Machine Check List
- Preventive Manintenance
- Break Dwn Registration
- Recovery with CAPA Analysis
- Machine & Tool History Card

THE BRAND NEW YET MATURE FACE OF SAFAL

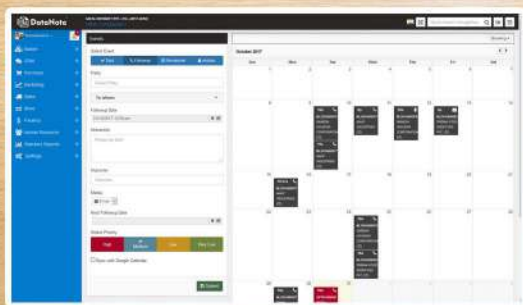
DataNote is the newest version from SAFAL

DataNote includes many new features and offers a new client. The **DataNote ERP** is a web-based product with a modern look and feel. It's supported on multiple platforms – tablets, smart phones, laptops and desktops – by industry standard browsers. The **DataNote ERP** can be used in conjunction with the **DataNote ERP** and you can choose to give your users access to one or both clients, depending on their needs. **DataNote** provides a modern and impressive user interface and ensures a consistent user experience across all platforms and devices. Because it is built on the modern technology, you have the flexibility to tailor the application to include dashboards that present metrics and data that are important to you, business logic to enforce your company processes and best practices as well as activities that are automatically synchronized to your calendar.

Let's take a look at the DataNote interface,



This screenshot shows a detailed data table within the DataNote interface. The table has multiple columns, including 'Date', 'Time', 'Location', 'Status', and 'Action'. The data is organized in a clear, readable format with alternating row colors.



This screenshot shows another detailed data table within the DataNote interface. The table has multiple columns, including 'Date', 'Time', 'Location', 'Status', and 'Action'. The data is organized in a clear, readable format with alternating row colors.





Why DataNote ERP?

POWERING YOUR ENTIRE BUSINESS

From supply chain management to purchasing, customer relationships to sales, and inventory to accounting, DataNote ERP covers all areas of planning, operations, logistics, administration, finance and management on one platform. Real-time data is accessible with integrity and accuracy leading to prompt and confident decision-making, premium customer service and transparent risk management. With integrated workflow and business modeling, each of your business areas can define its own conditions, working environment and dashboards on a per-user basis.

DESIGNED TO GROW WITH YOU

From small single-site organizations to large multi-company enterprises, DataNote ERP is highly scalable and will grow with you. Depending on your business requirements, implement only what you need. DataNote ERP will adapt to your changing business conditions. With every new update, the client will have a number of new facilities and utilities to get latest update from the market.

FLEXIBLE AND EASILY CUSTOMIZABLE

While most companies require the same core functionality, each company has unique elements in its operations. DataNote ERP provides powerful business modeling tools allowing your company to use our proven template models or personalize the ERP to your unique requirements. With no need to change source code, DataNote ERP is adaptable with natural flexibility and will accommodate the most sophisticated requirements with ease using first in class customization tool available in DataNote ERP.



About Safal



HIGHLIGHTS OF SAFAL

In 2009 Smart Business Solution launch with **SAFAL INFOSOFT PVT. LTD.** Apart from the development center in Ahmedabad, having a large dealer network across India and across the globe.

We have implemented **ISO 9001** Quality Management System from day one of operation. Our development and service units are passed through strict confidentiality measures as per **ISO / IEC 27001:2013** processes, making the security as well as surety of world wide customer's data.

Our research and testing facilities are exemplary in the field of highly corrosive Software Systems. We bring a vast array of experience and know how to bear in the Software Engineering and IT Services. **SAFAL INFOSOFT PVT. LTD.** is achieving total customer satisfaction by their prestigious customers like **Public Limited / National / MNCs** Companies. This company has been working with companies from abroad for technical guidelines to develop various software, websites for Customized Solutions.

To achieve Total Customer Satisfaction is the philosophy of the company. **SAFAL INFOSOFT PVT. LTD.** shall provide help to customers for identifying application areas, solving the problems & quicker services through Q.C. & marketing Department as well as attending customer complaints on time. The company is professionally managed by experienced developers and technologists and dedicated team of dynamic technocrats & experience staff in the field and management is continually striving in investing new facilities, people and technology.

OUR GLOBAL FOOTPRINTS





ERP & CRM



SAFAL
INFOSOFT PVT. LTD.

An ISO 27001:2013 Certified Company

Corporate Office:

A-210, Signature 2 Business Park, Sakhej Sanand Cross Road,
SG Highway, Ahmedabad - 382210, Gujarat - INDIA

Development Office:

C-302, Signature 2 Business Park, Sakhej Sanand Cross Road,
SG Highway, Ahmedabad - 382210, Gujarat - INDIA

www.datanote.in, www.safalerp.com

Toll Free Number: 1800 270 0405 (India)